



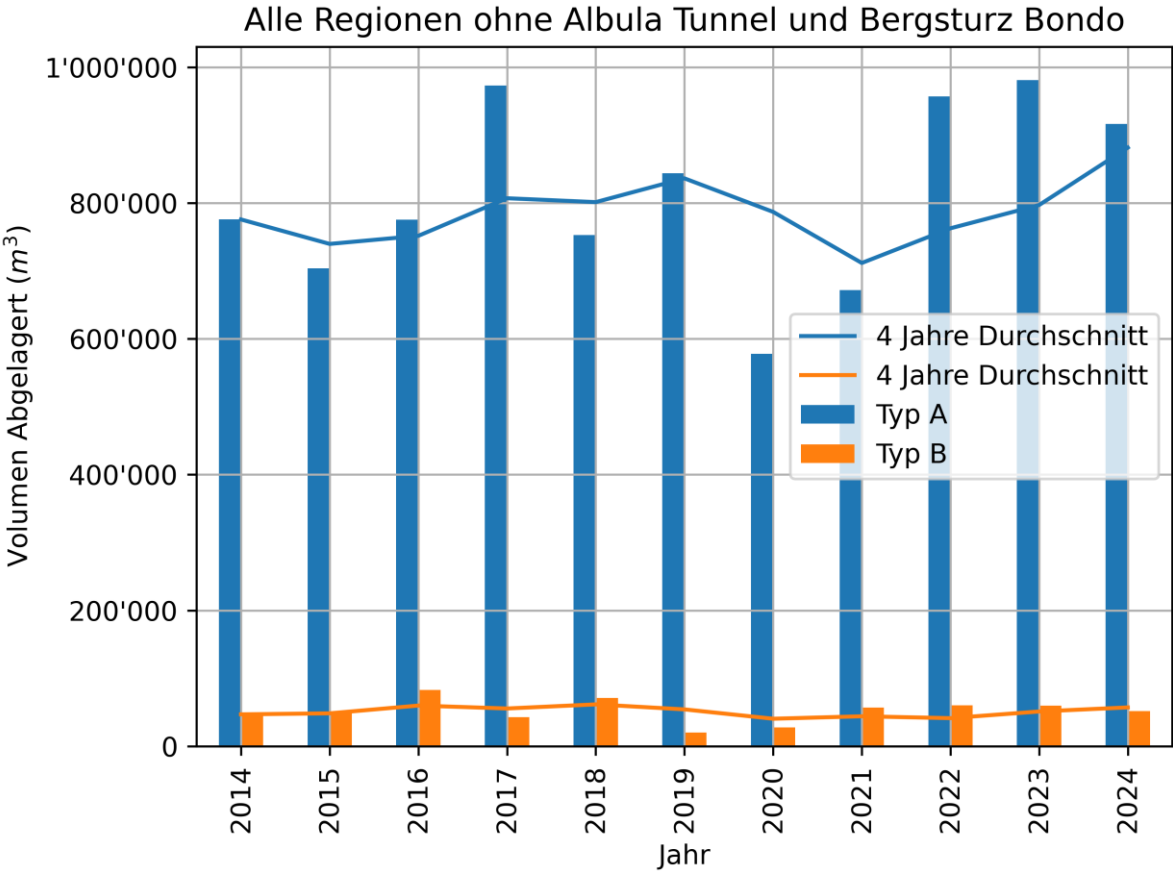
Statistik Deponien Graubünden 2014-2024

ANU-401-52d

Inhalt

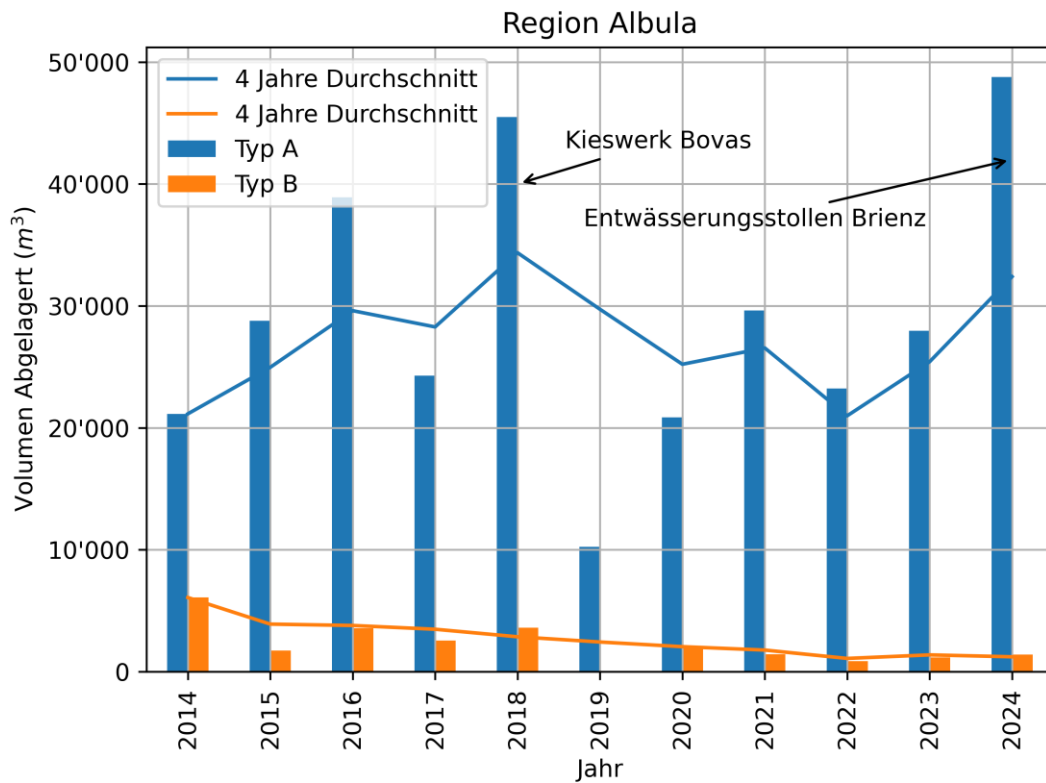
1	Ablagerungen ganzer Kanton Typ A und Typ B	2
2	Ablagerungen Regionen Typ A und Typ B	3
2.1	Albula.....	3
2.2	Engadina Bassa-Val Müstair	3
2.3	Imboden, Landquart und Plessur.....	4
2.4	Maloja.....	4
2.5	Moesa.....	5
2.6	Prättigau-Davos	5
2.7	Surselva.....	6
2.8	Viamala.....	6
3	Verfügbares Volumen ganzer Kanton Typ A	7
4	Verfügbares Volumen Regionen Typ A	8
4.1	Albula.....	8
4.2	Engadina Bassa-Val Müstair	8
4.3	Imboden, Landquart und Plessur.....	9
4.4	Maloja.....	9
4.5	Moesa.....	10
4.6	Prättigau-Davos	10
4.7	Surselva.....	11
4.8	Viamala.....	11
5	Verfügbares Volumen ganzer Kanton Typ B	12
6	Verfügbares Volumen Regionen Typ B	13
6.1	Albula.....	13
6.2	Engadina Bassa-Val Müstair	13
6.3	Imboden, Landquart und Plessur.....	14
6.4	Maloja.....	14
6.5	Moesa.....	15
6.6	Prättigau-Davos	15
6.7	Surselva.....	16
6.8	Viamala.....	16

1 Ablagerungen ganzer Kanton Typ A und Typ B

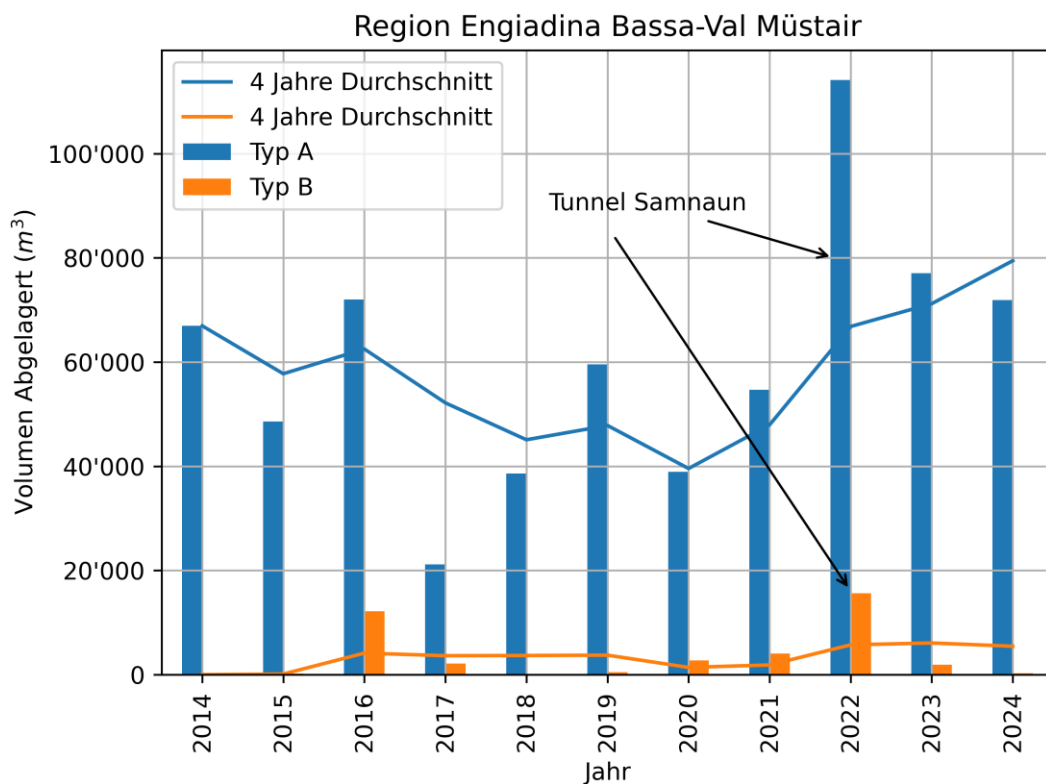


2 Ablagerungen Regionen Typ A und Typ B

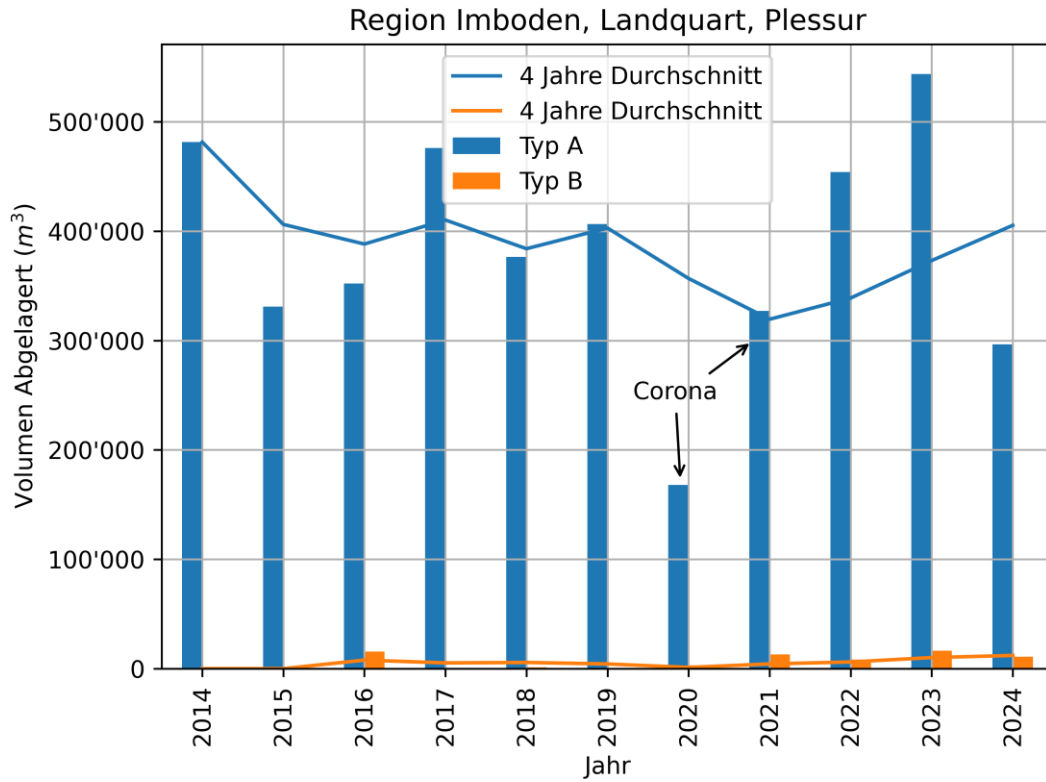
2.1 Albula



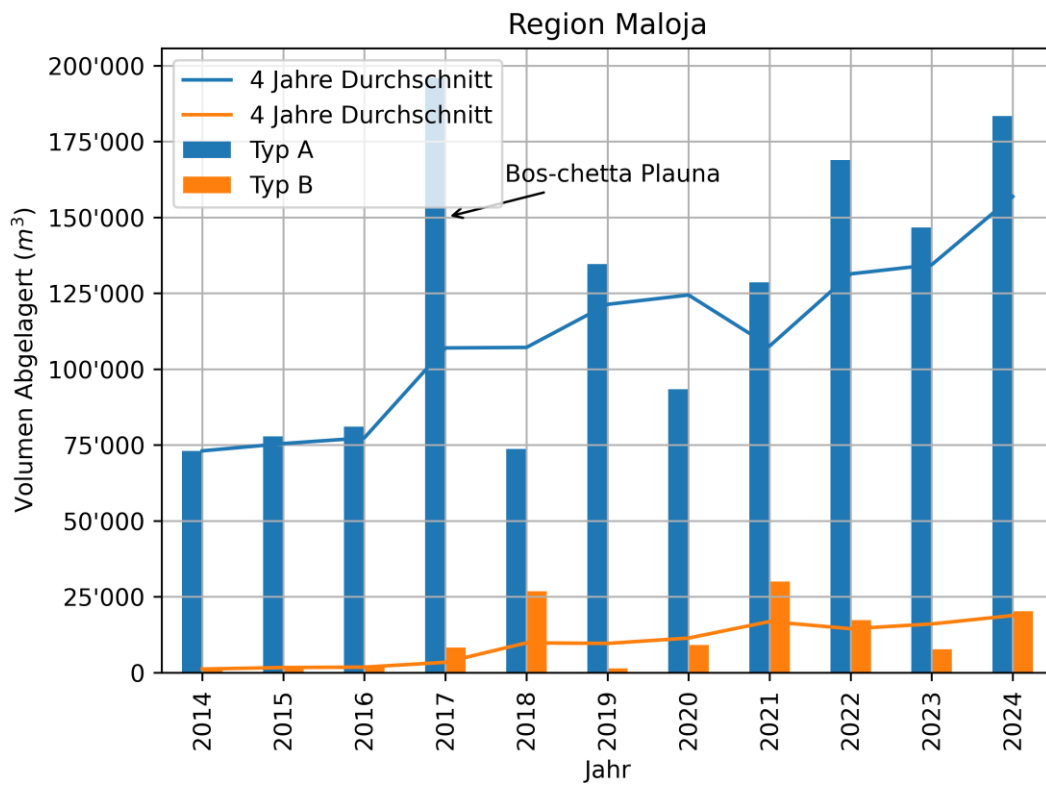
2.2 Engadina Bassa-Val Müstair



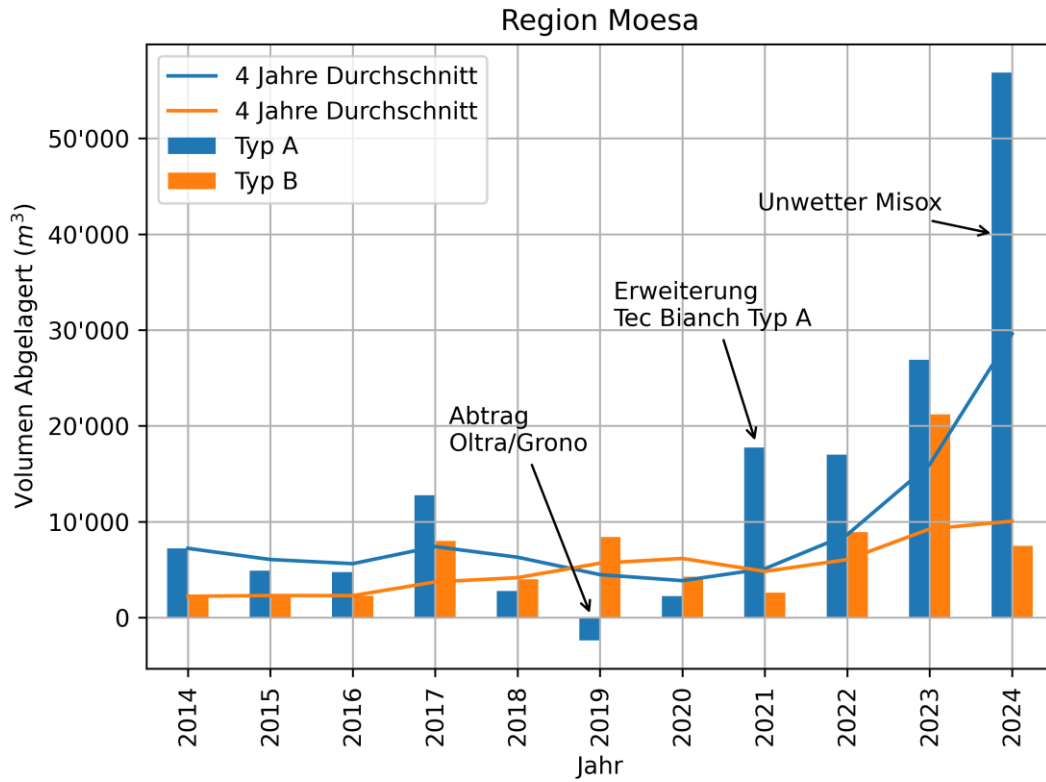
2.3 Imboden, Landquart und Plessur



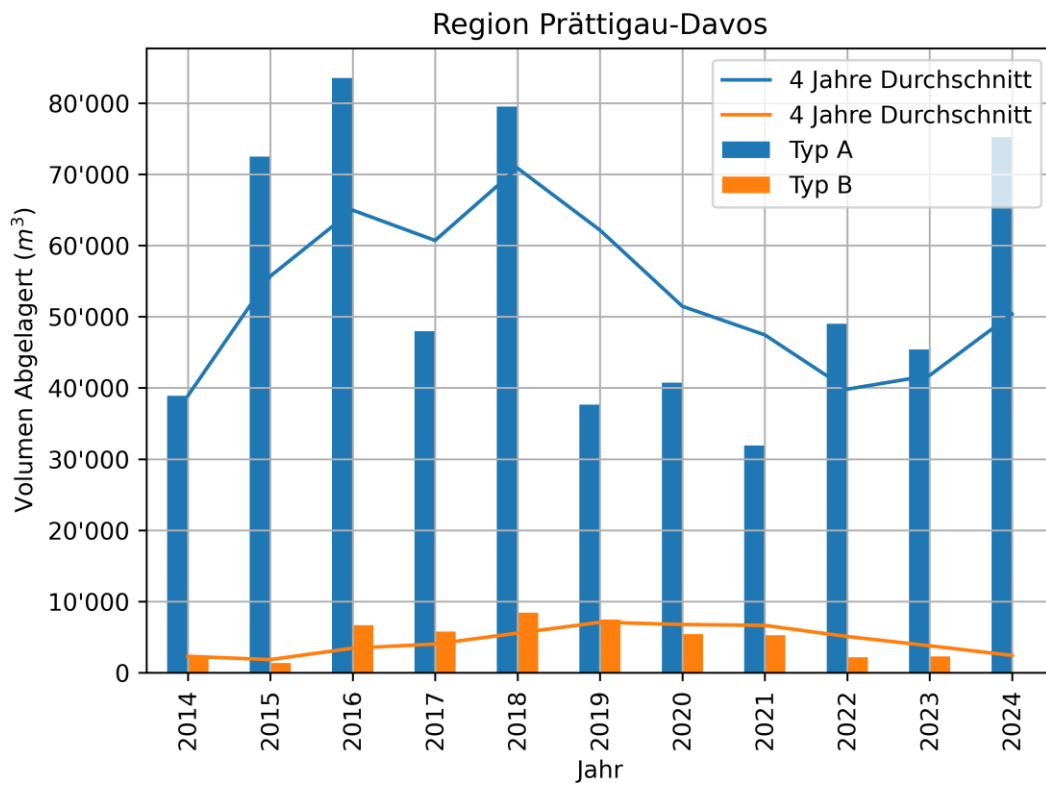
2.4 Maloja



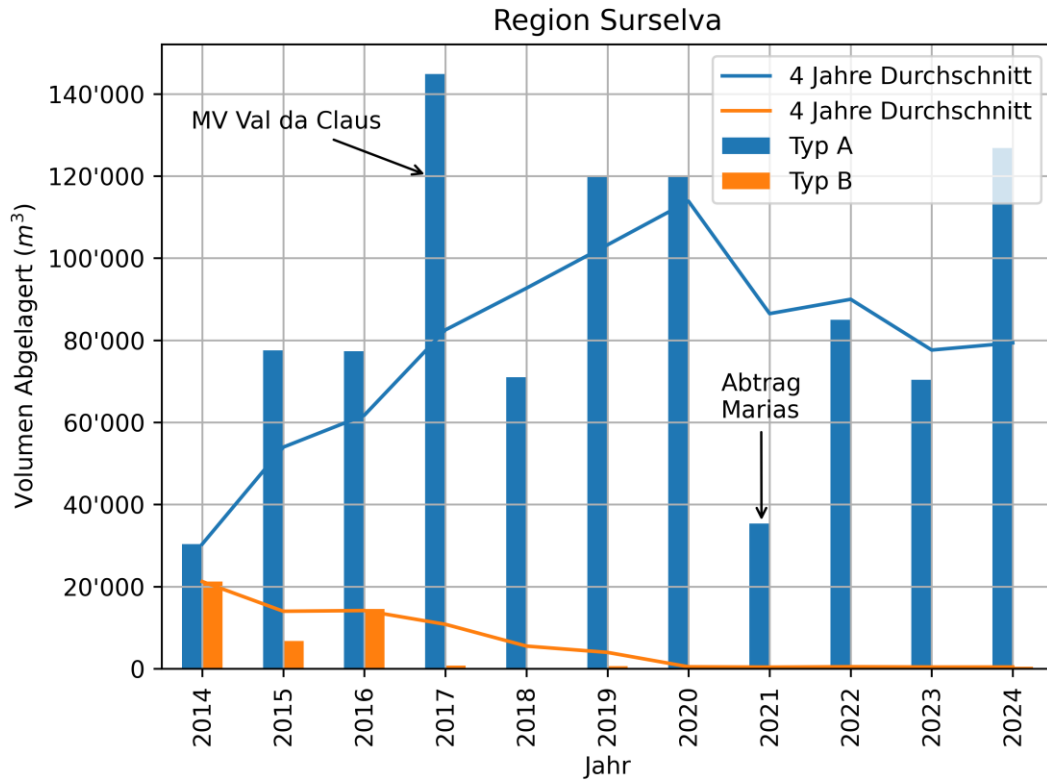
2.5 Moesa



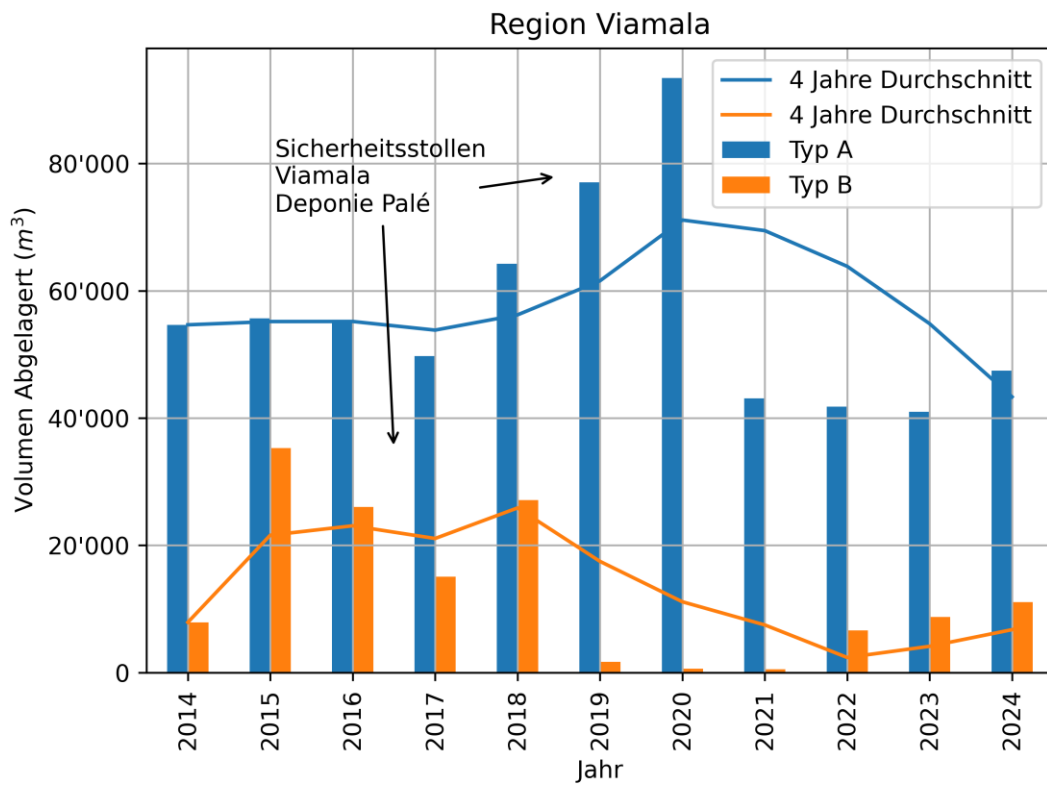
2.6 Prättigau-Davos



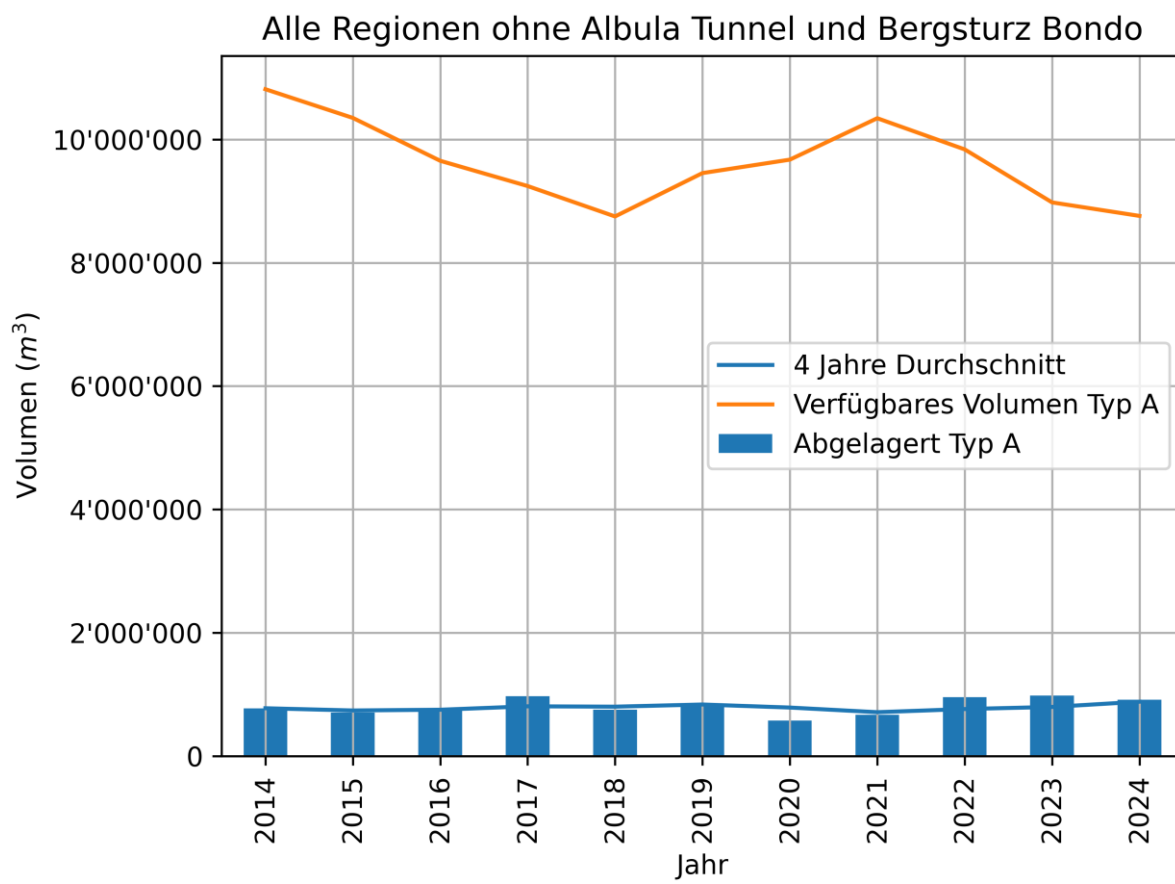
2.7 Surselva



2.8 Viamala

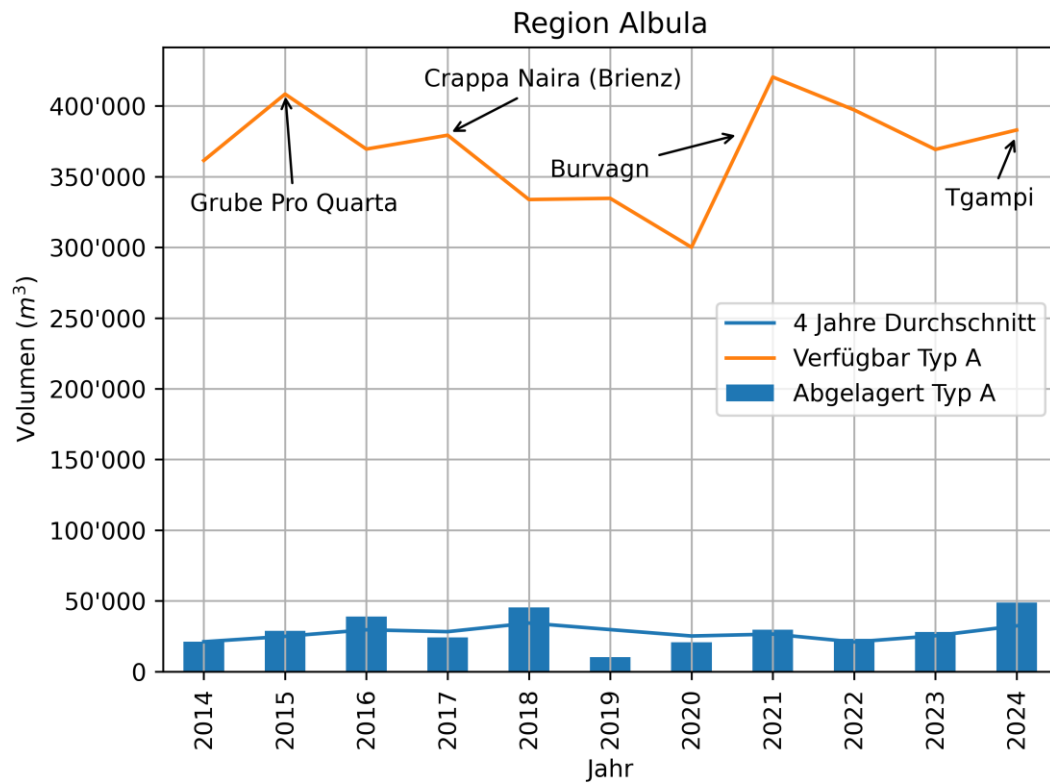


3 Verfügbares Volumen ganzer Kanton Typ A

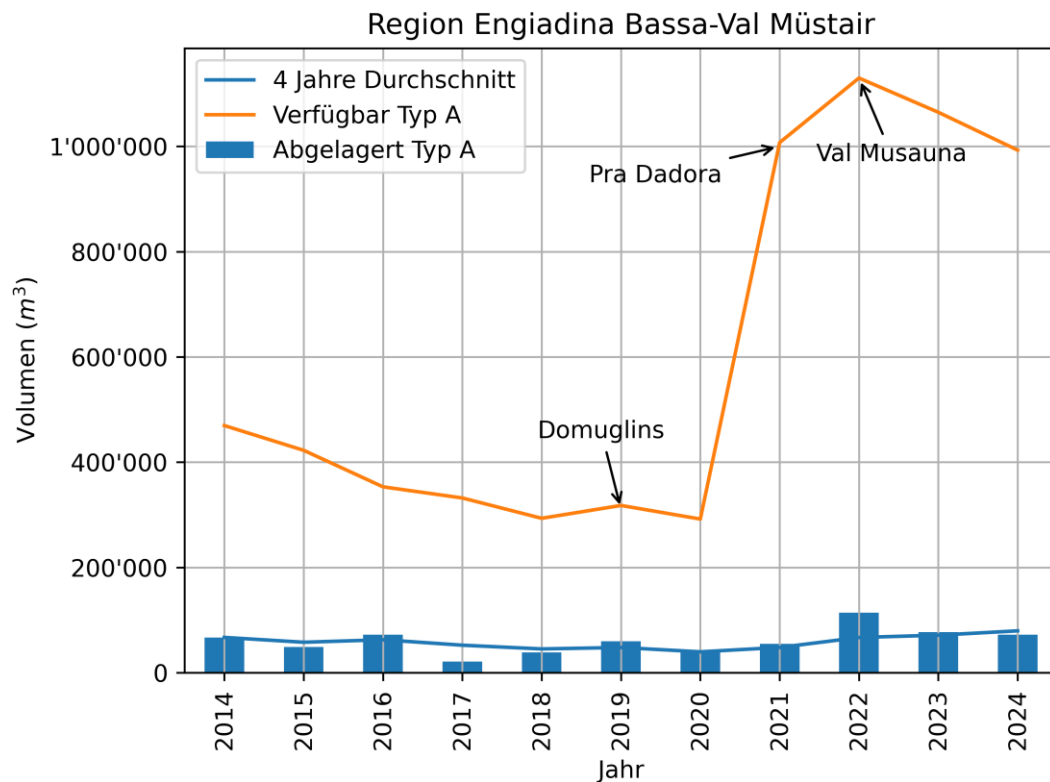


4 Verfügbares Volumen Regionen Typ A

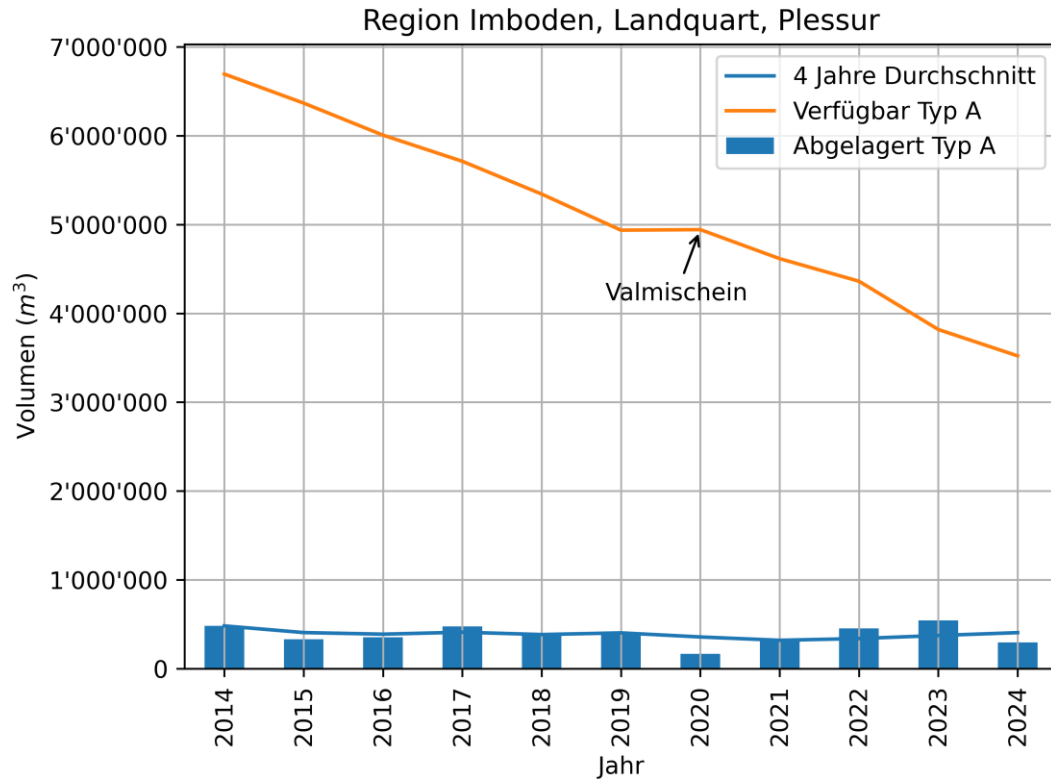
4.1 Albula



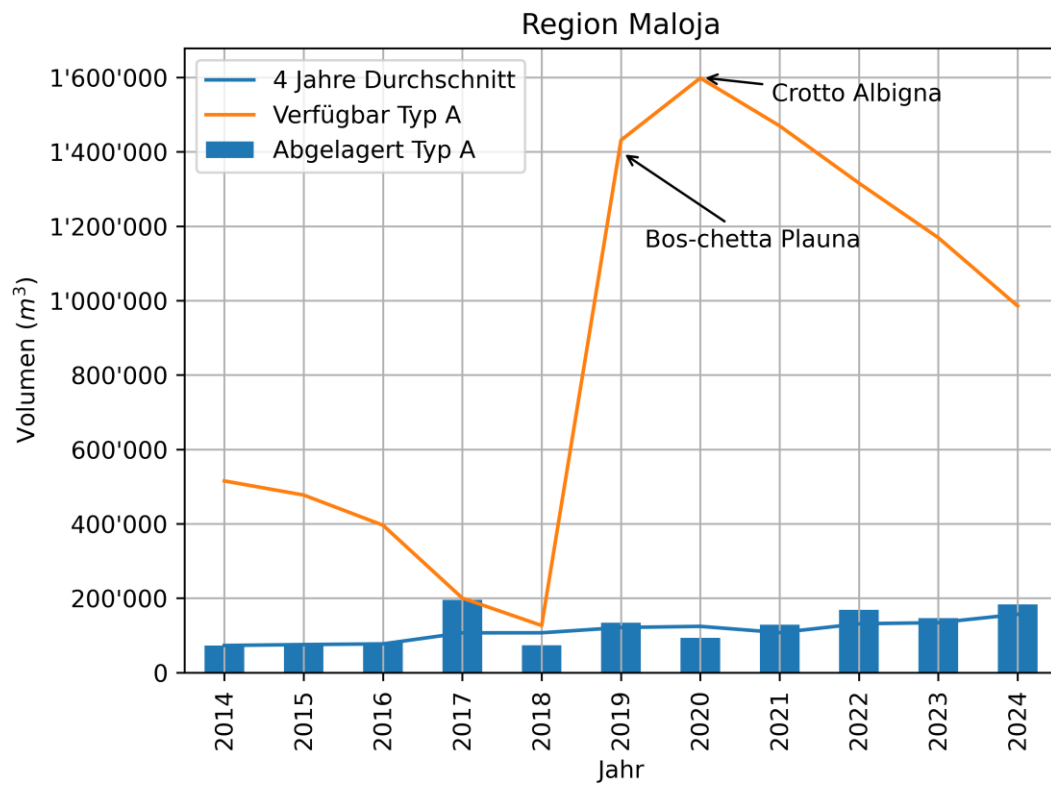
4.2 Engadina Bassa-Val Müstair



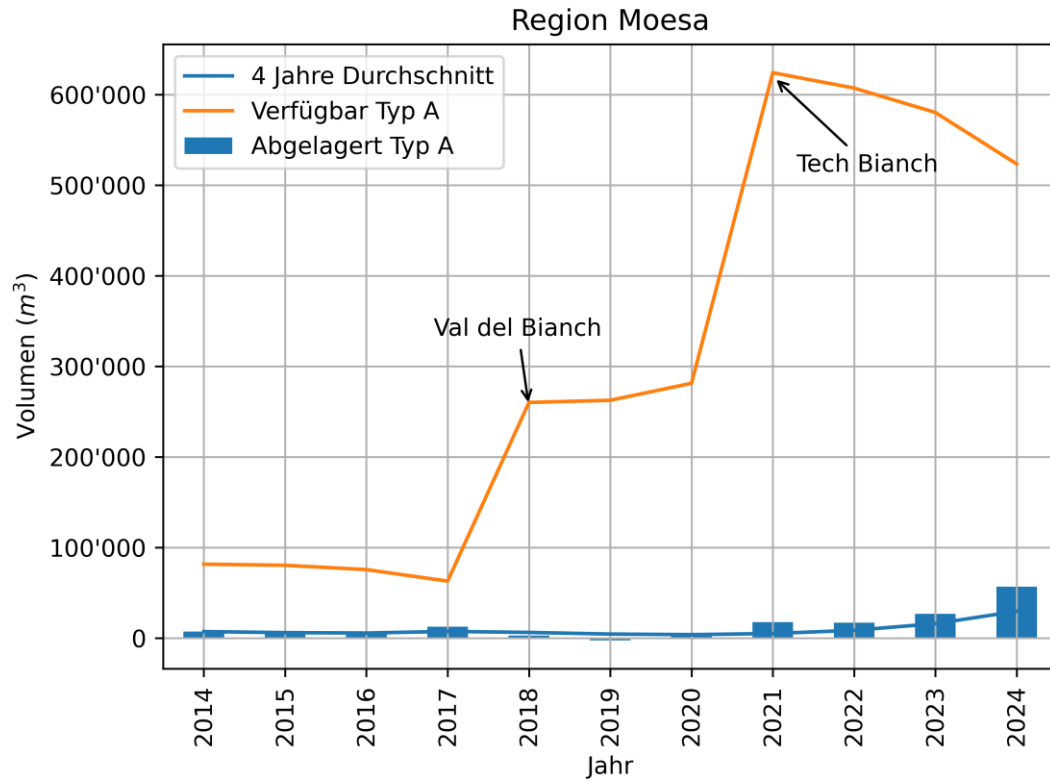
4.3 Imboden, Landquart und Plessur



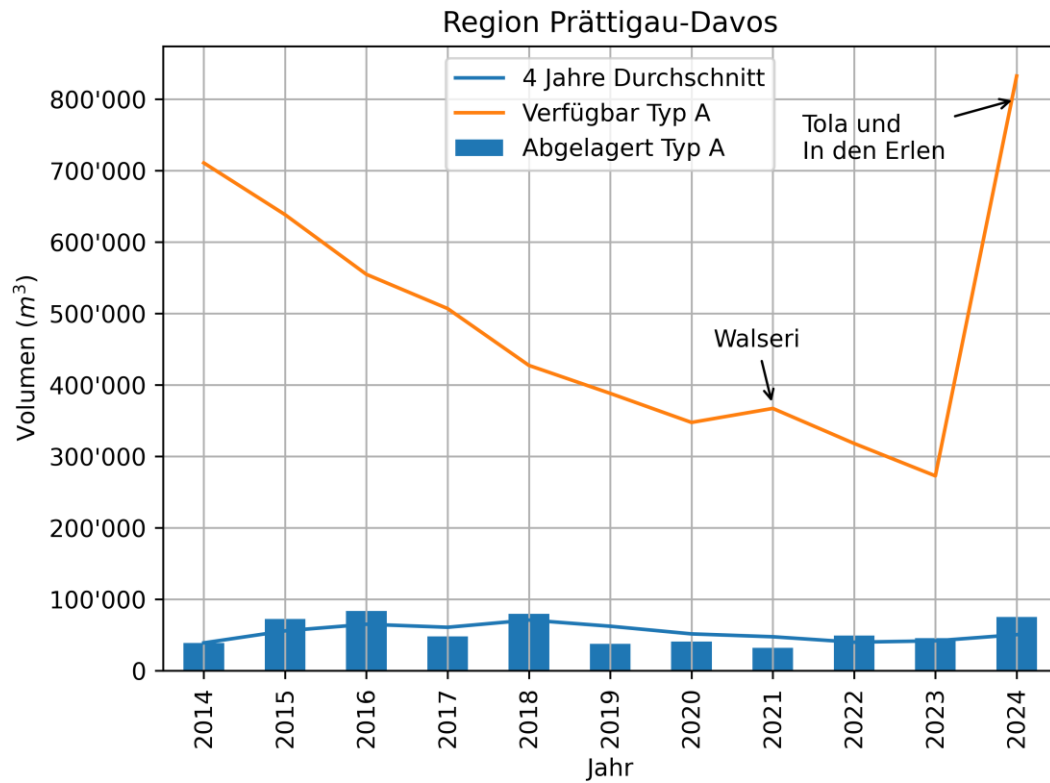
4.4 Maloja



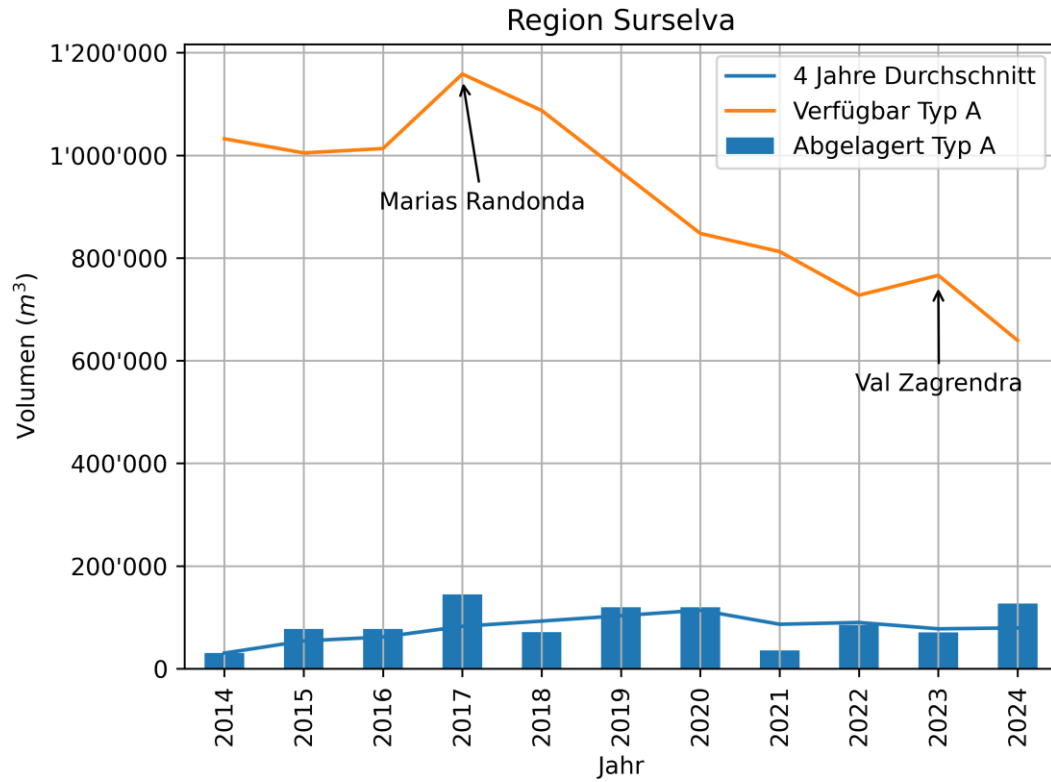
4.5 Moesa



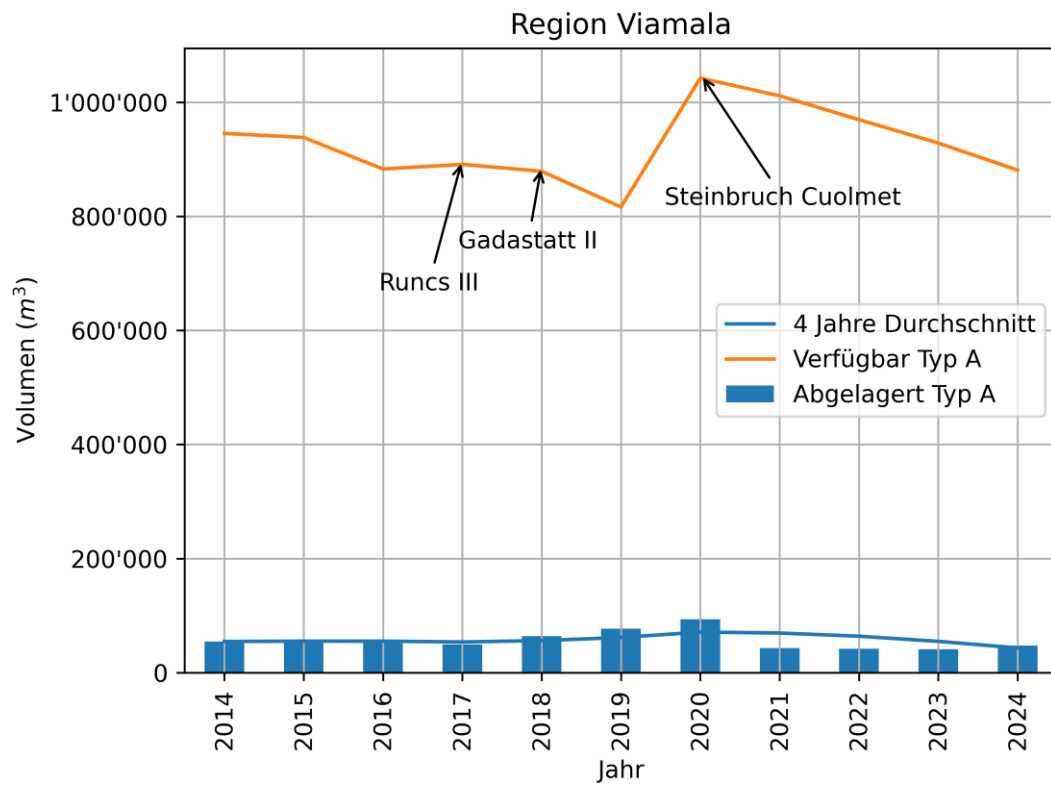
4.6 Prättigau-Davos



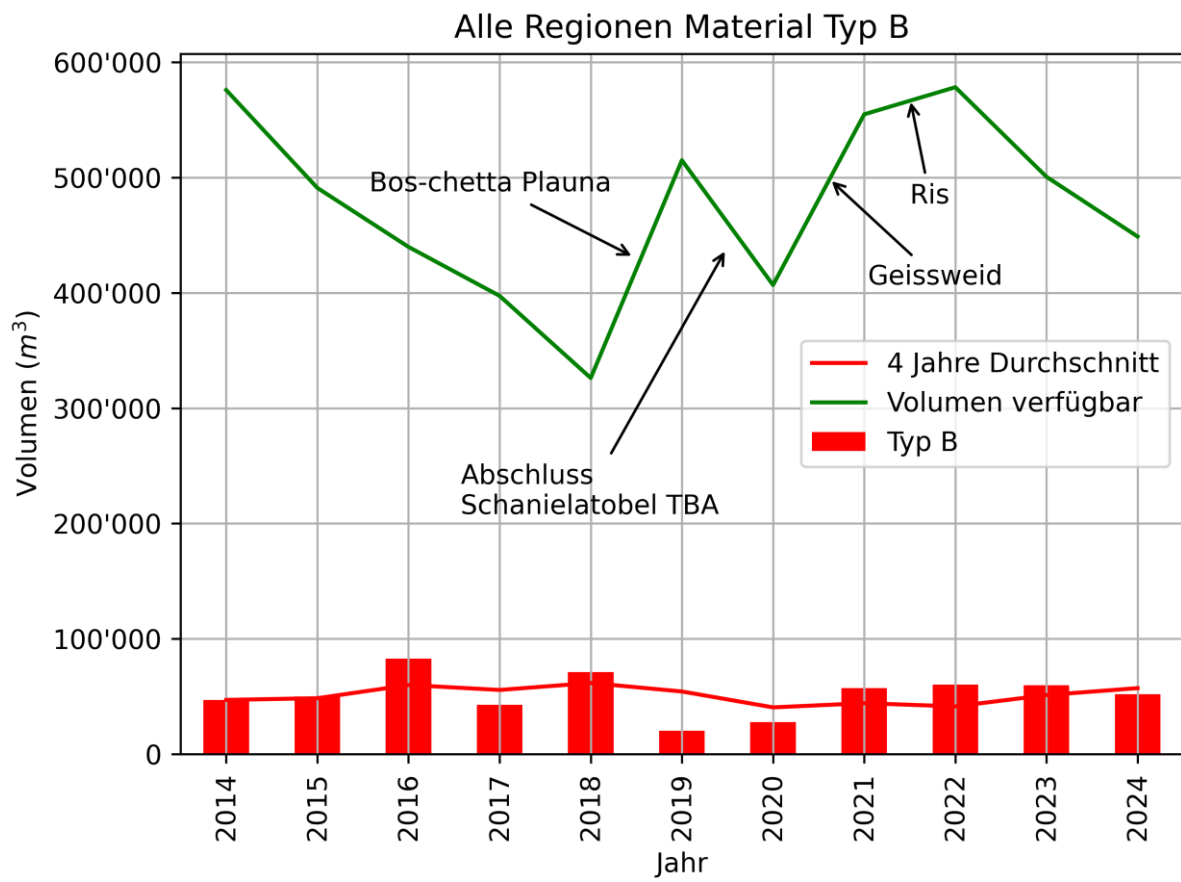
4.7 Surselva



4.8 Viamala

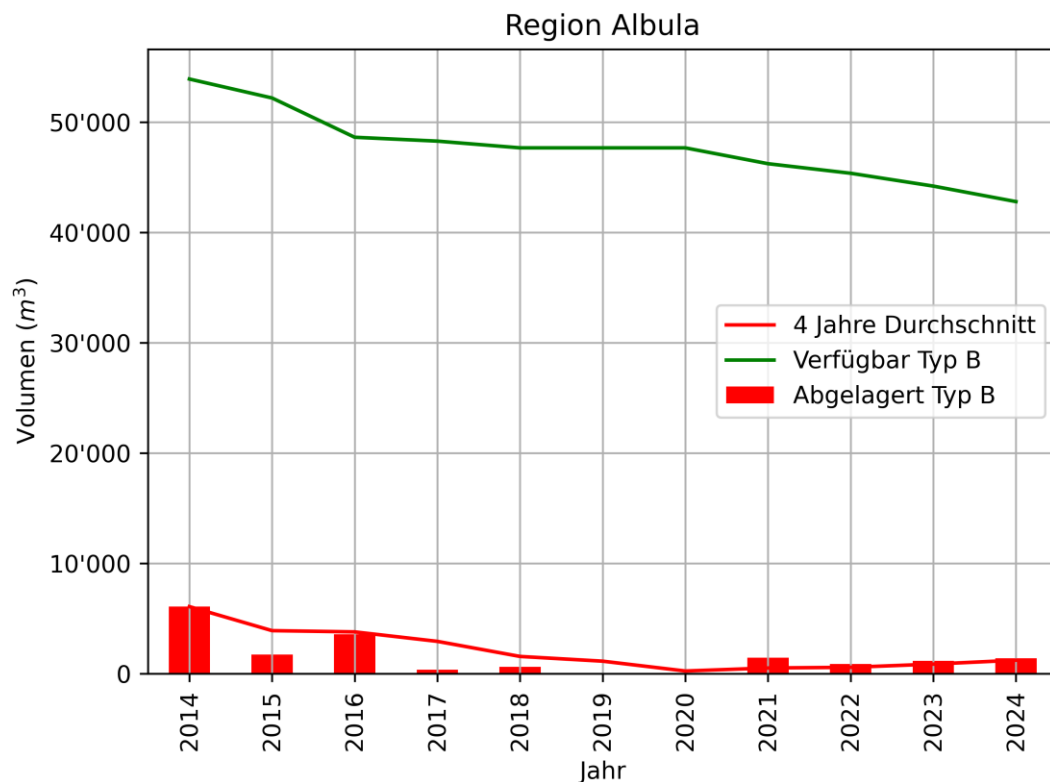


5 Verfügbares Volumen ganzer Kanton Typ B

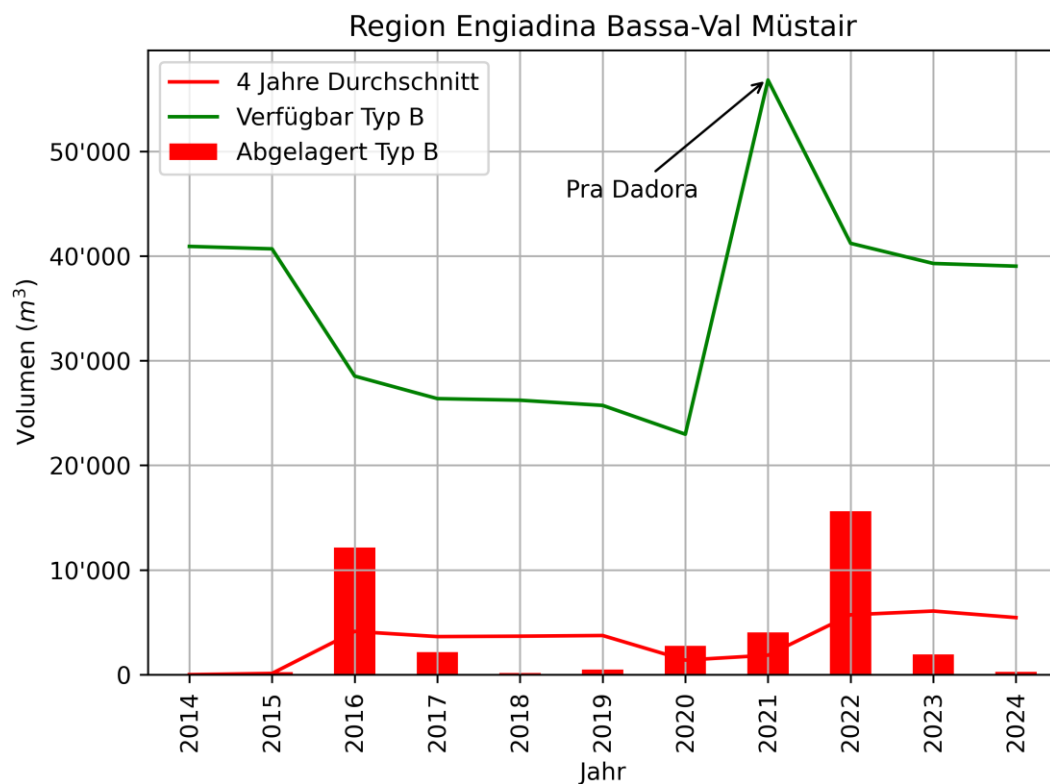


6 Verfügbares Volumen Regionen Typ B

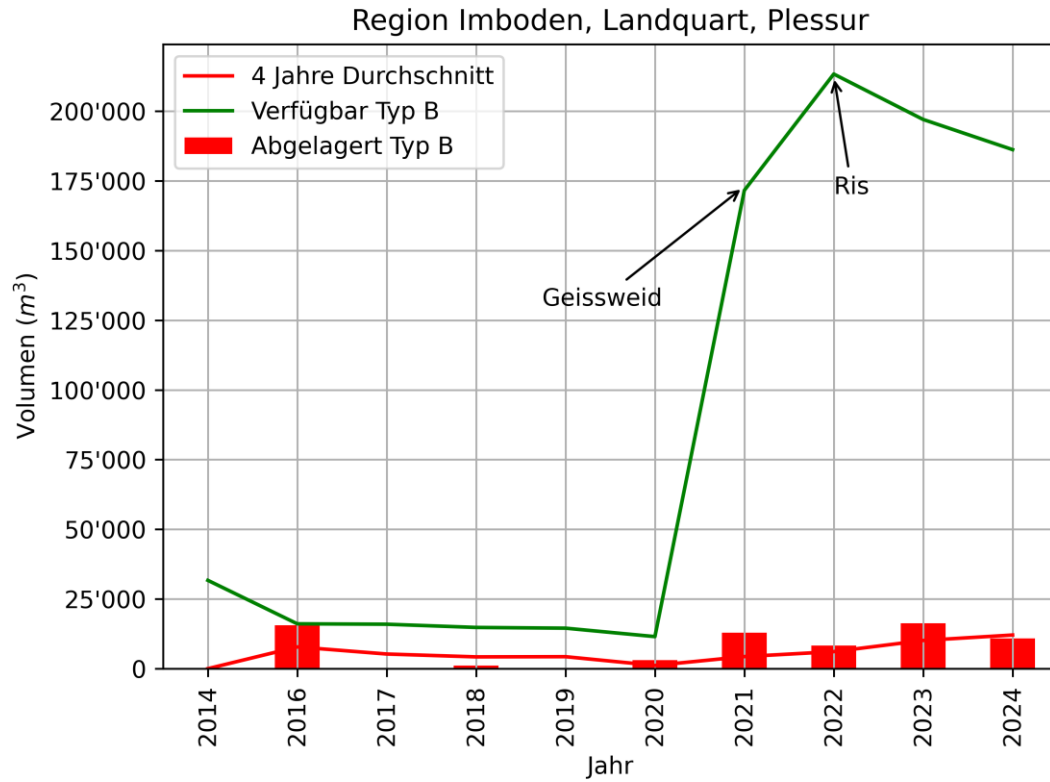
6.1 Albula



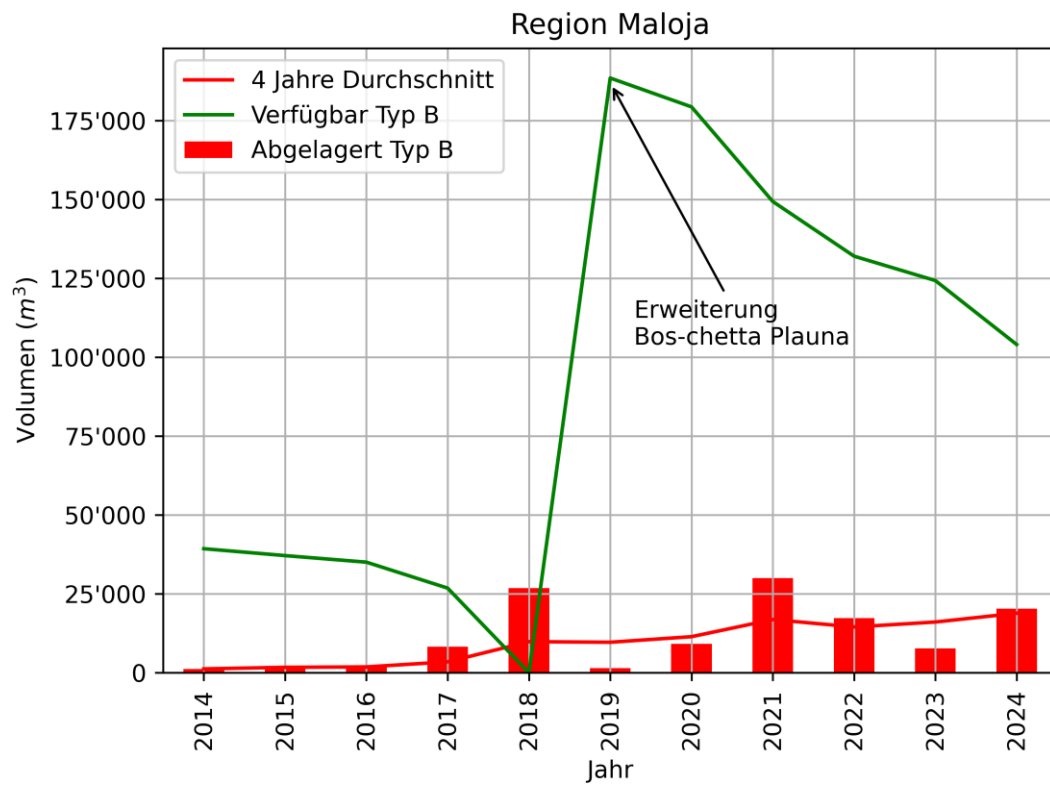
6.2 Engadina Bassa-Val Müstair



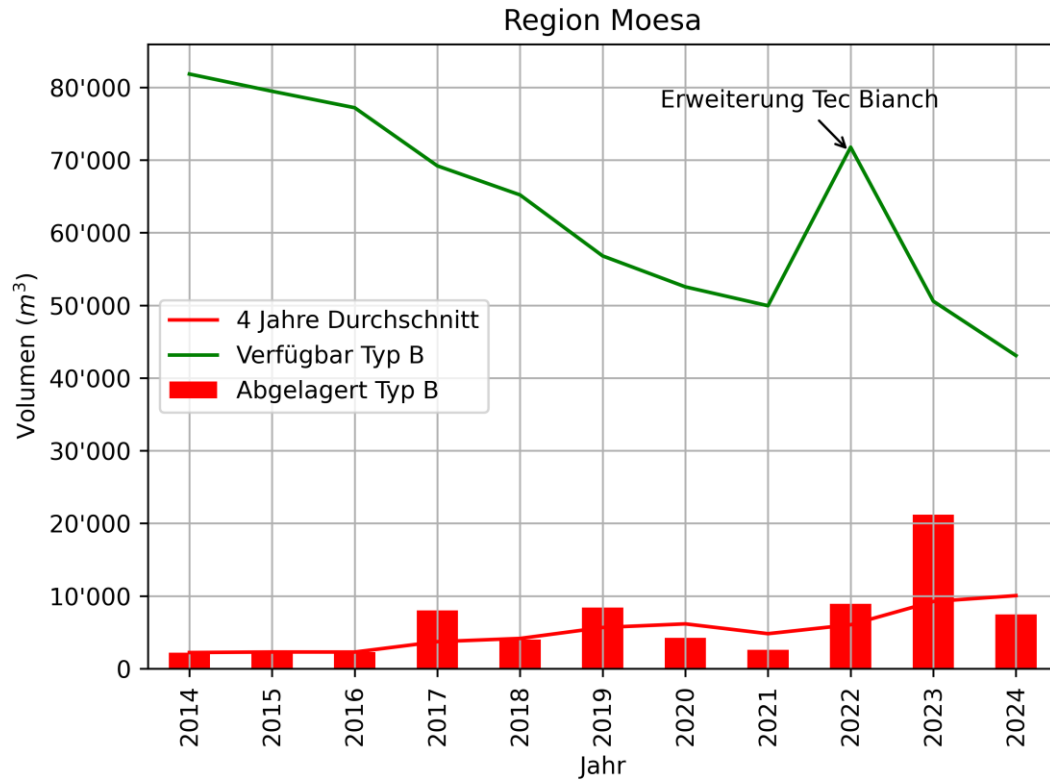
6.3 Imboden, Landquart und Plessur



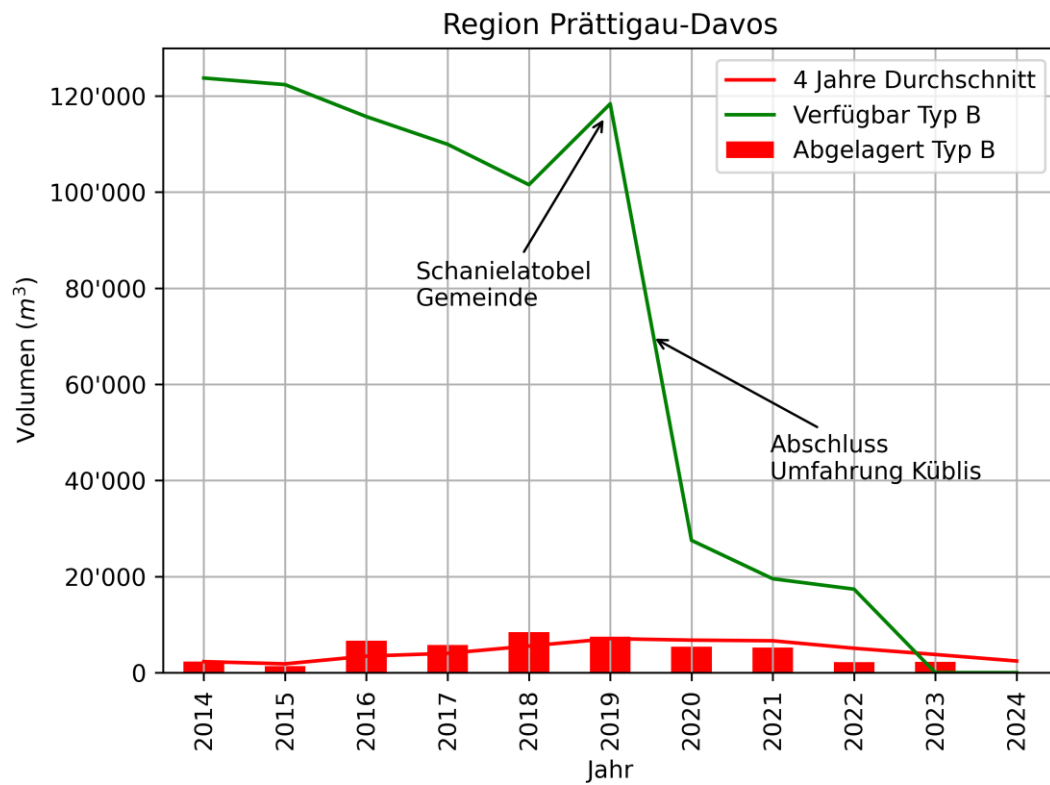
6.4 Maloja



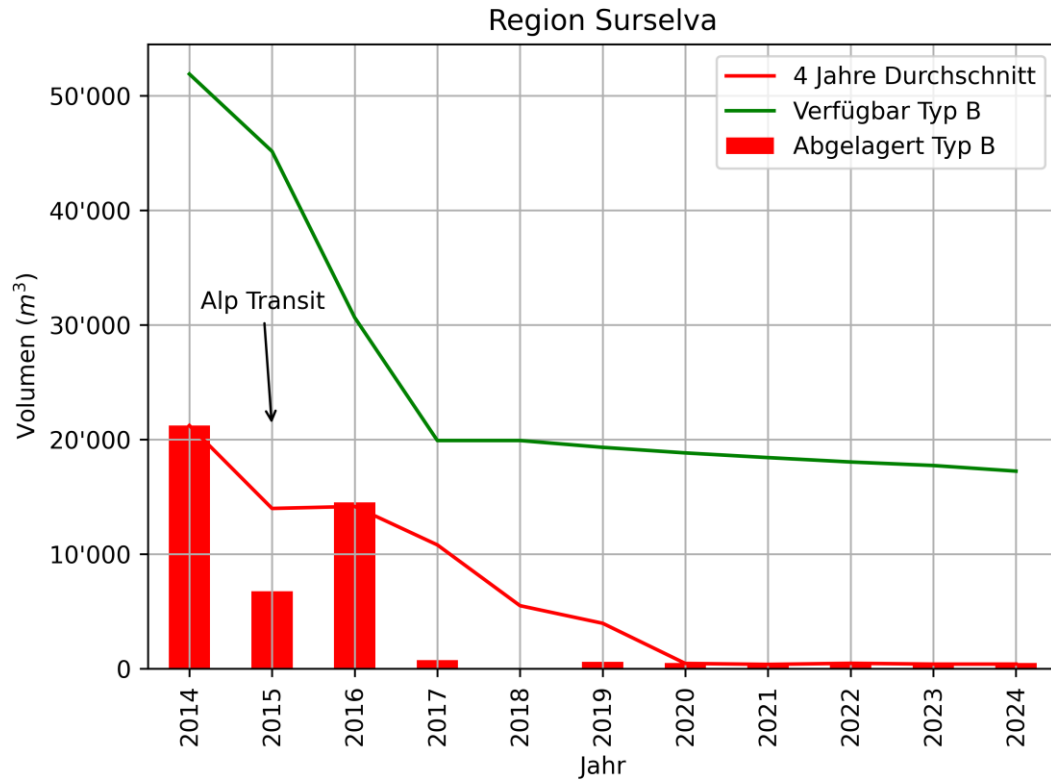
6.5 Moesa



6.6 Prättigau-Davos



6.7 Surselva



6.8 Viamala

